

Usage of Windows MMC

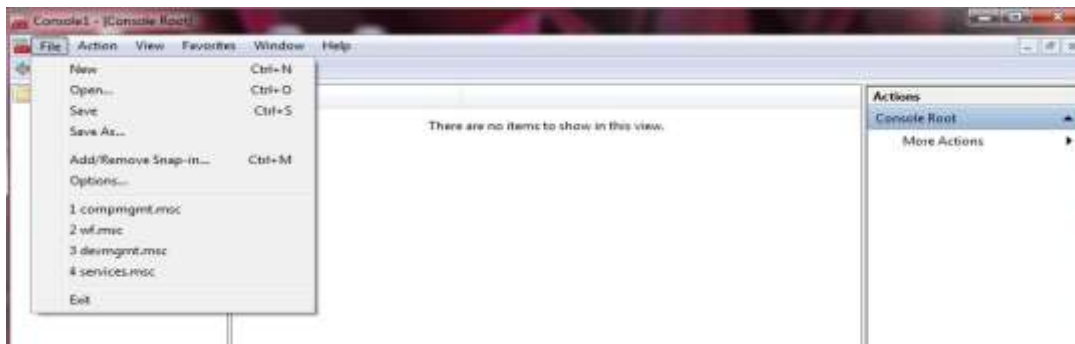
To

Change Root SSL Certificate Properties in e-Payment User Clients (PC)

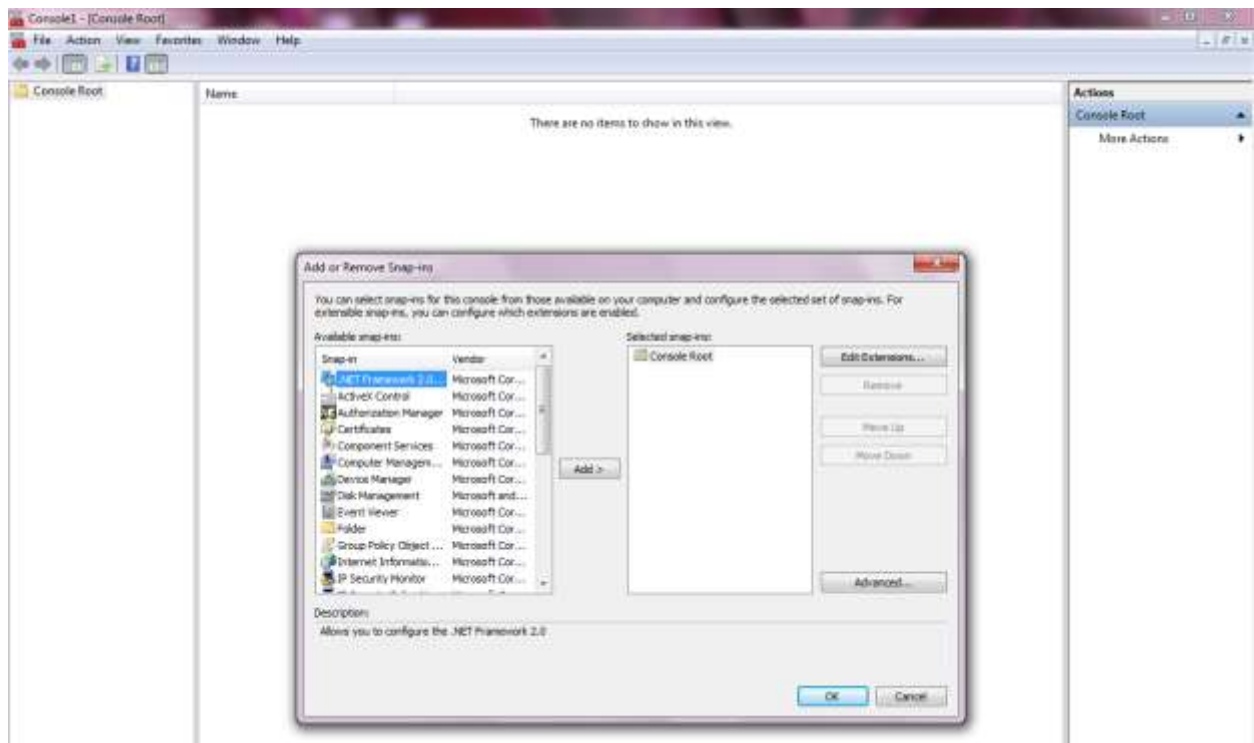
Open Windows - > Run and type *mmc* and click OK.



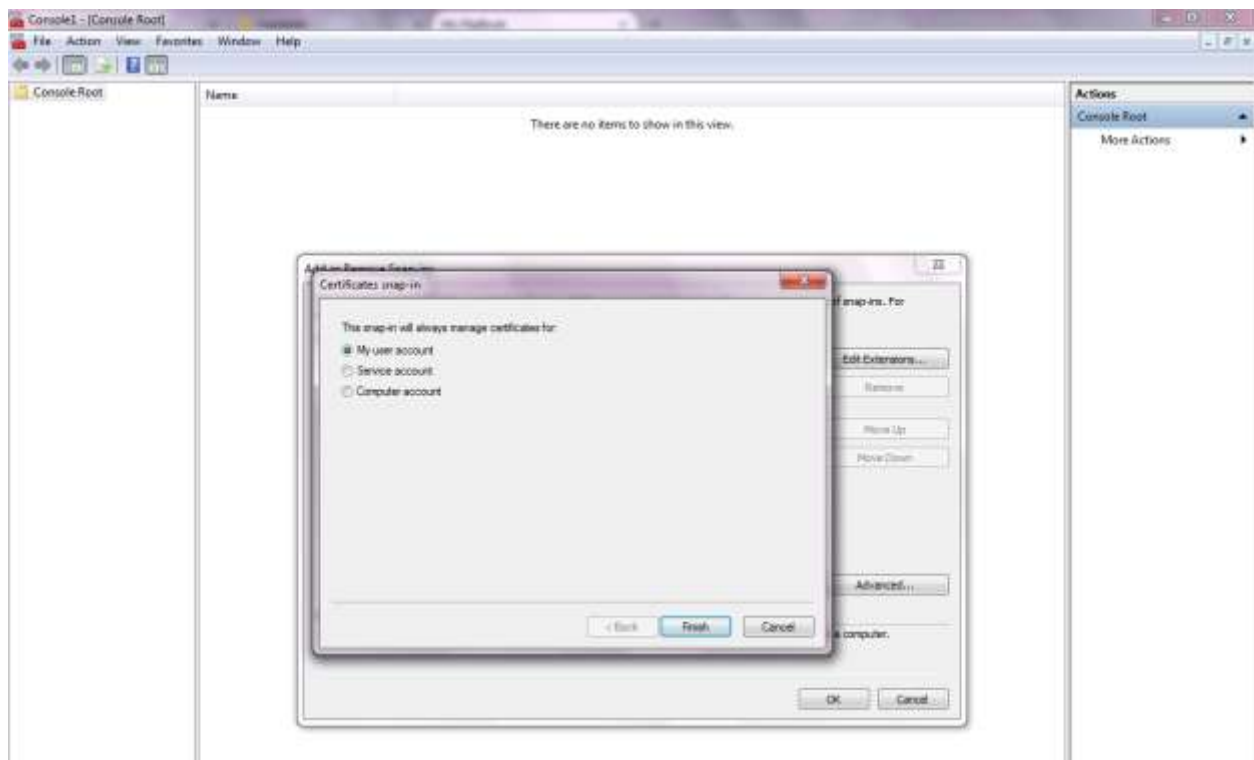
In MMC window select *File - > Add/Remove Snap-in*



Select “*Certificates*” under available Snap-ins: and Click *Add*.



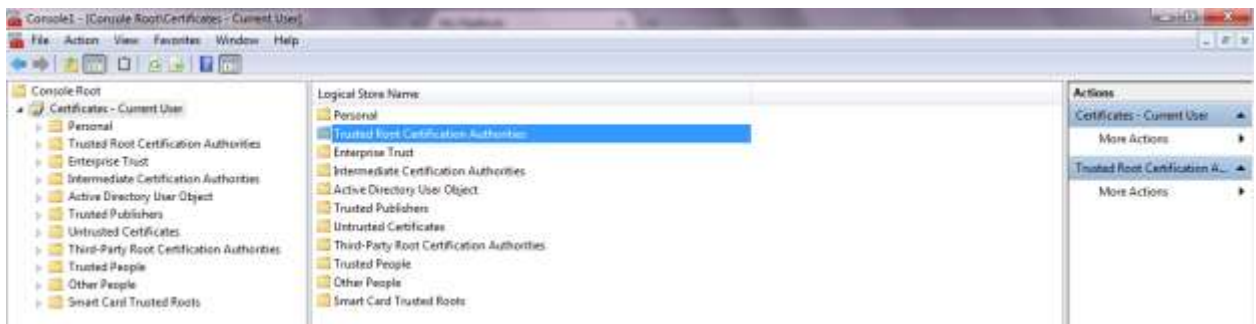
Click *Finish* and then *OK*



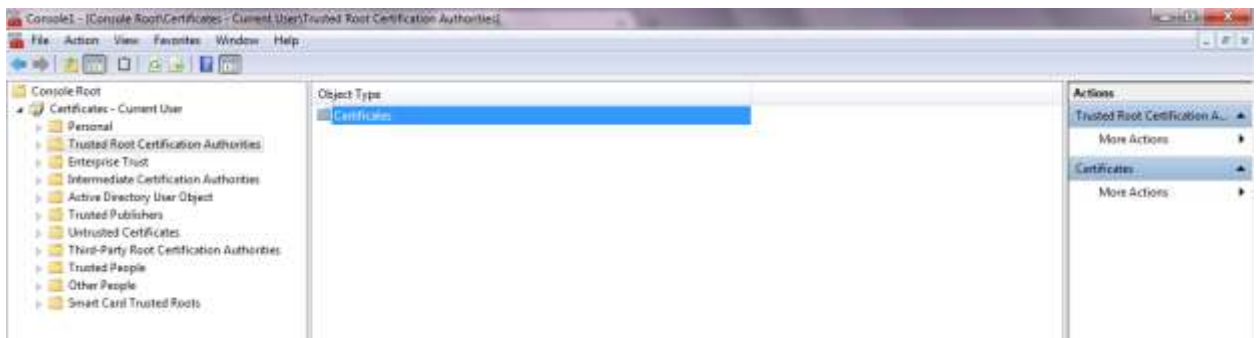
Double Click on *Certificates-Current User*



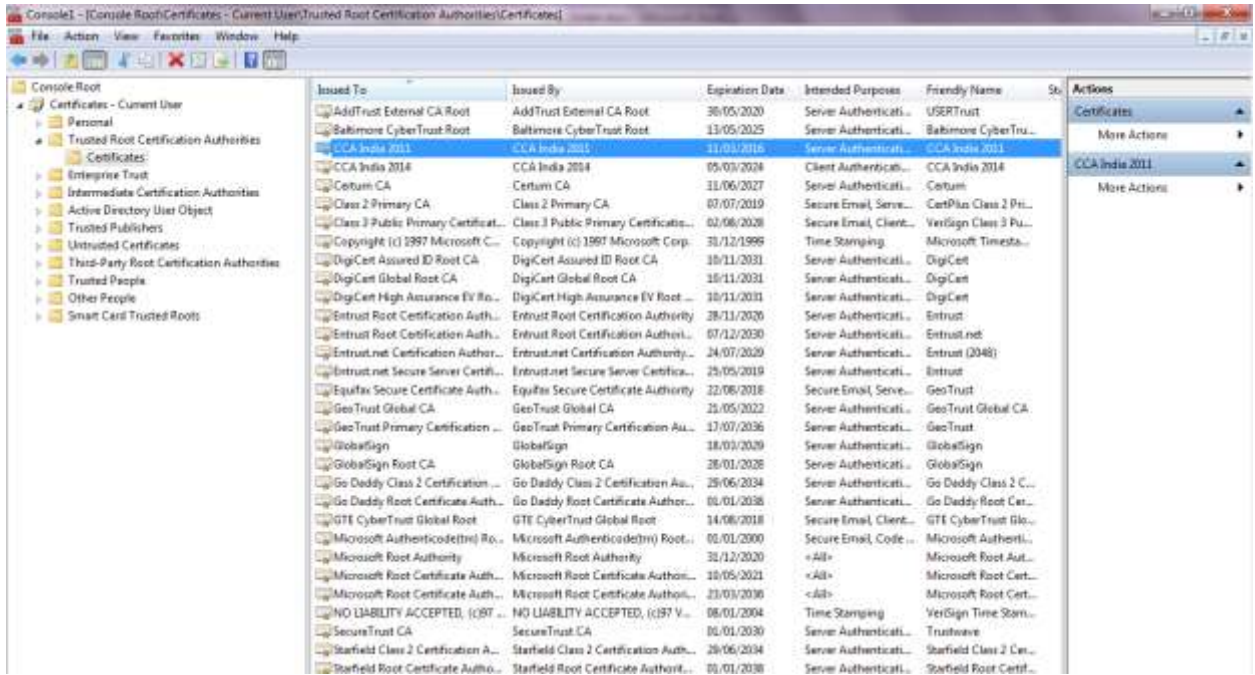
Open *Trusted Root Certification Authorities*



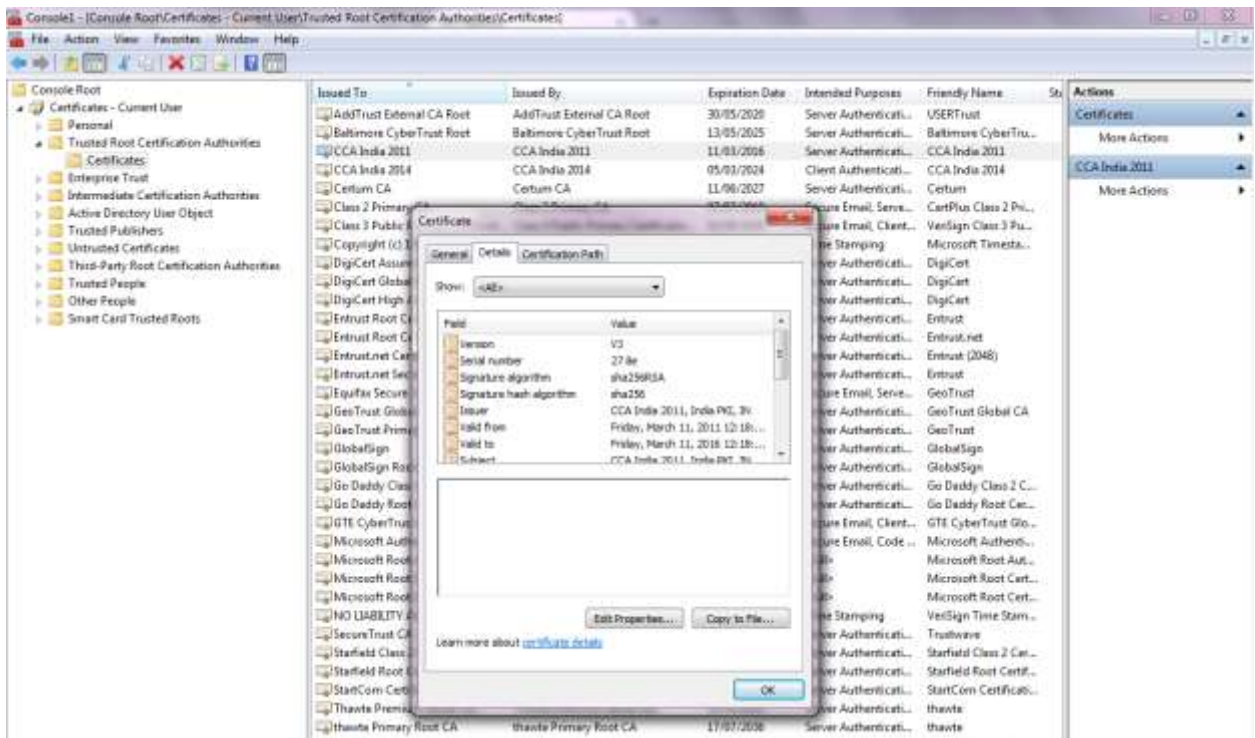
Open *Certificates* folder



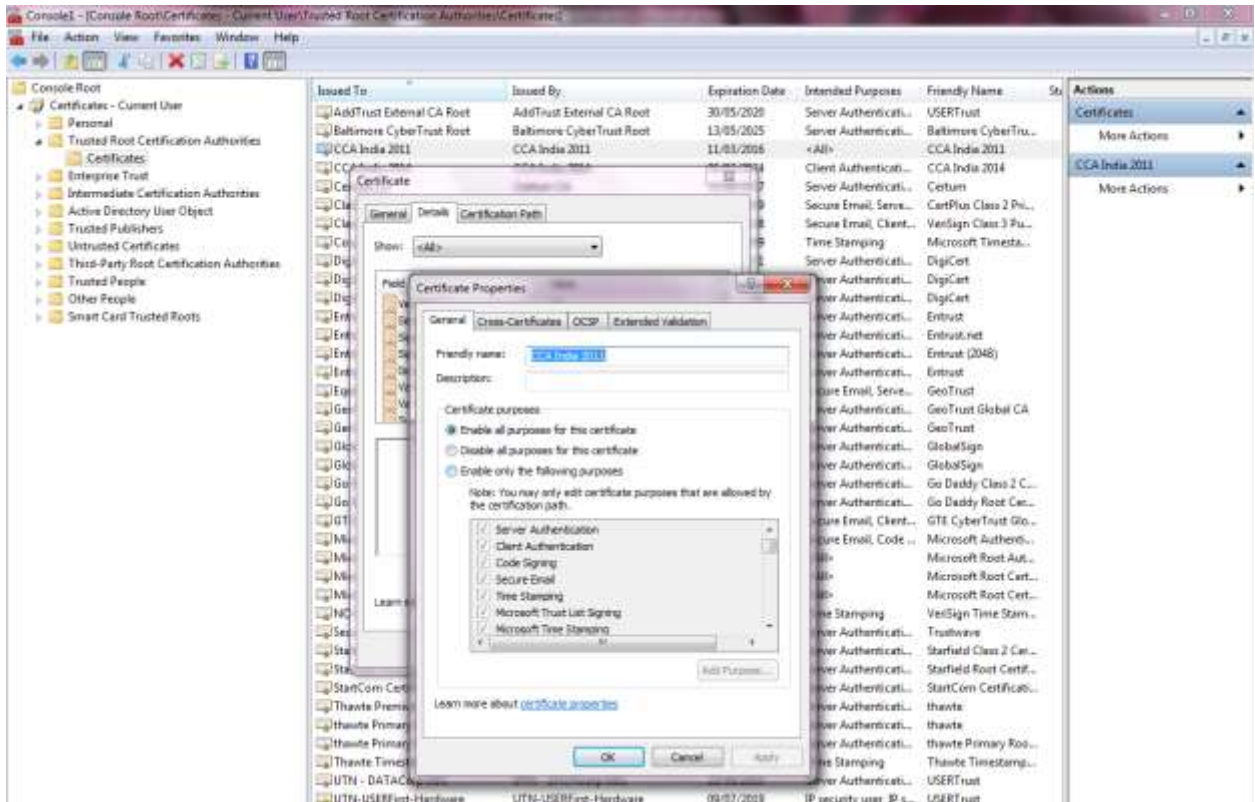
Navigate to “**CCA India 2011**” certificate and Double click



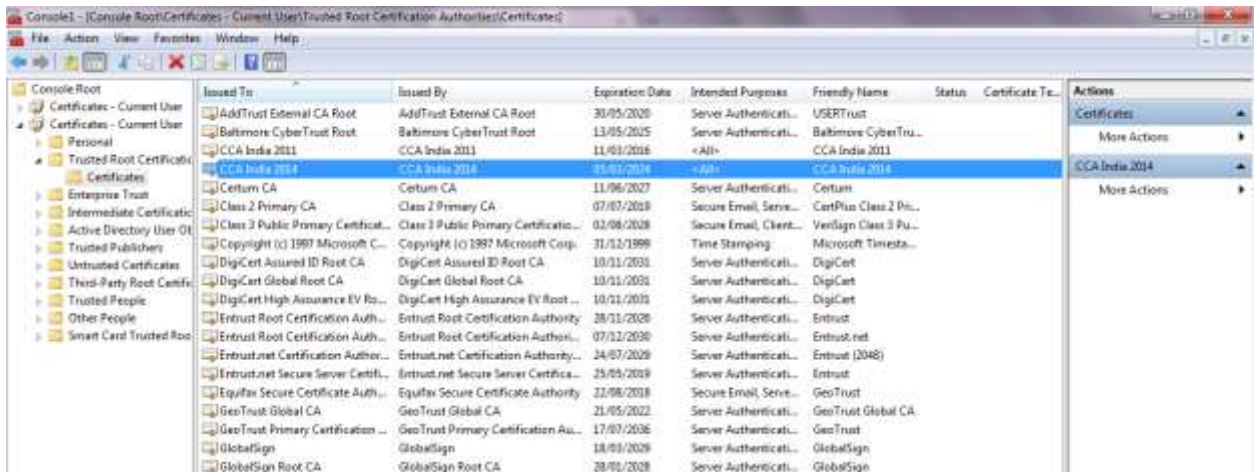
Click “**Details**” and then “**Edit Properties**”



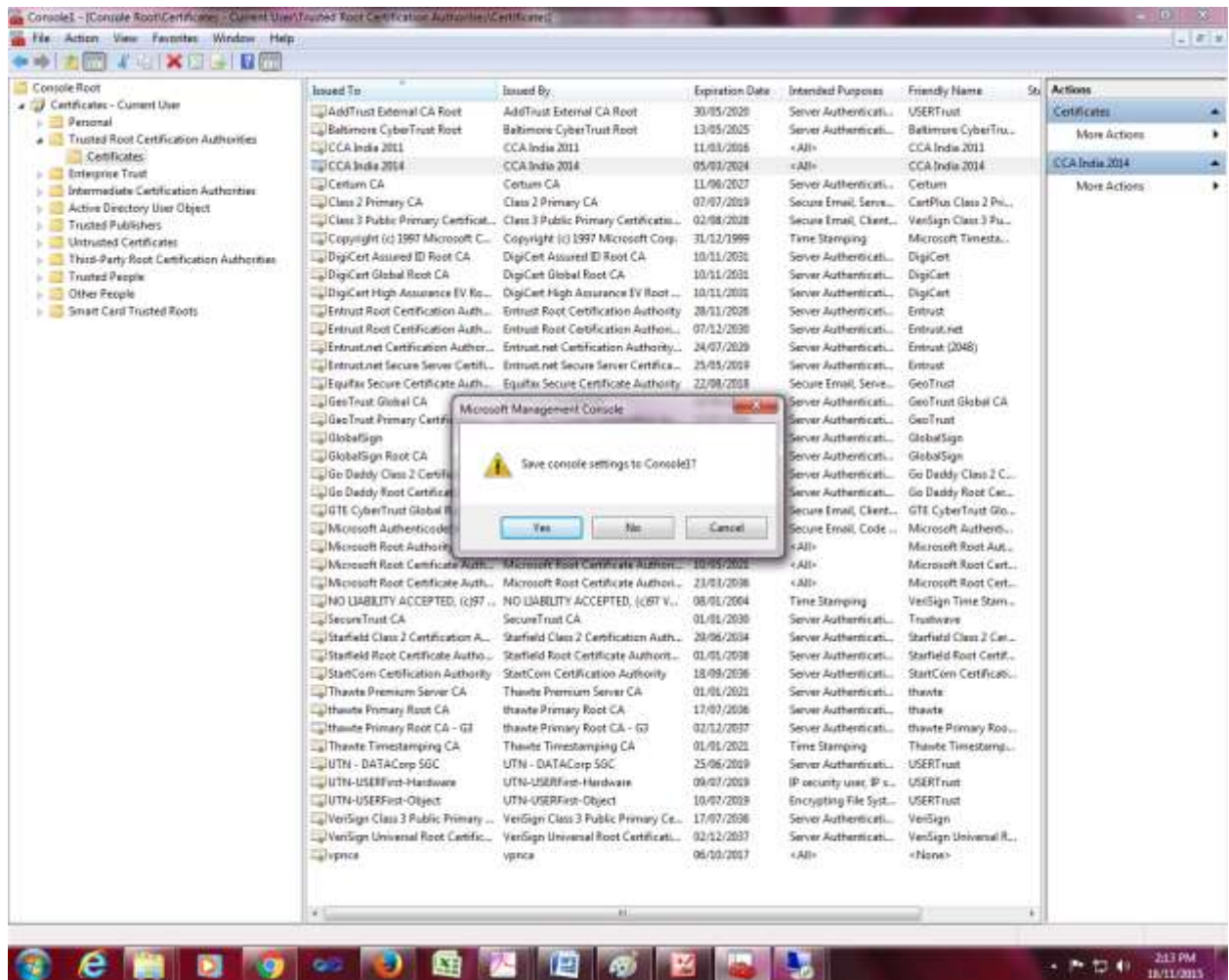
Choose/mark **“Enable all purposes for this certificate”** and click **OK**



Do the same for **“CCA India 2014”** certificate



Close / Exit MMC (*File->Exit*) and click **No** under “*Save Console settings to Console?*”



Now Re-open the Browser and start applying online for the posts of CVO.